

CERTIFIED LAND CORNER RECORDATION

DESCRIPTION OF CORNER EVIDENCE FOUND, AND ORIGINAL RECORD (if known)

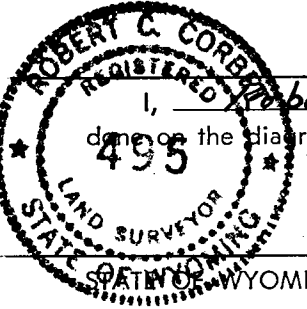
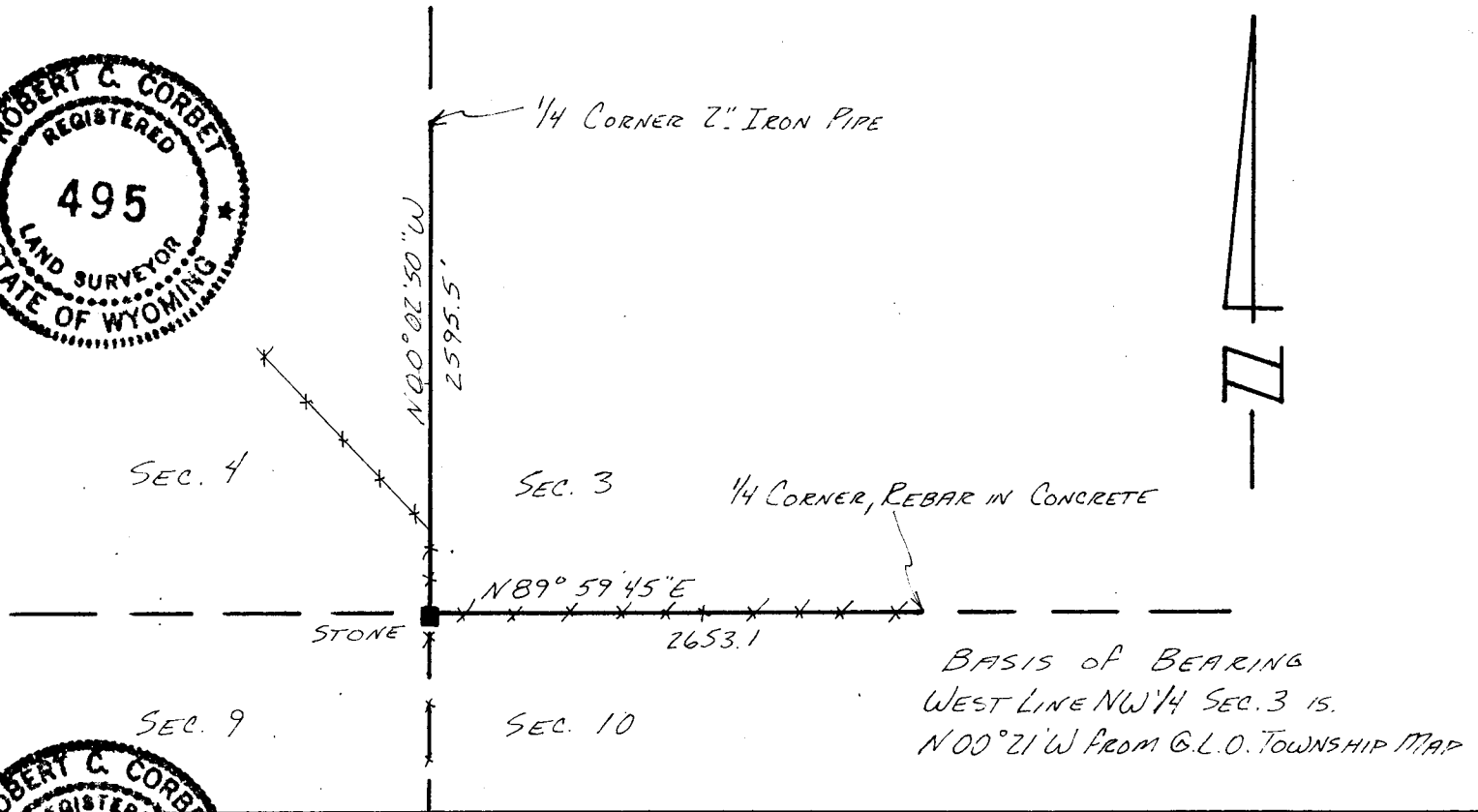
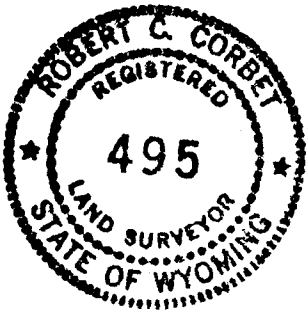
4	3
9	10

*FOUND WELL SET NOTCHED STONE, ADJACENT TO
SOUTHSIDE OF FENCE CORNER, APPROX.
0³ BELOW GROUND*

*T. 14 N., R. 67 W. 6th P.M.
LARAMIE COUNTY, WYOMING*

DESCRIPTION OF MONUMENT AND ACCESSORIES ESTABLISHED
TO PERPETUATE THE ORIGINAL LOCATION OF THIS CORNER:

SKETCH, WITH COURSE AND DISTANCE TO ADJACENT CORNER IF DETERMINED IN THIS SURVEY.
(May Sketch or Paste Reproduction on Reverse Side.)



I, Robert C. Corbet certify that I have carefully performed or reviewed the work done on the diagrammed corner as reported on this recordation form and approve the same.

Robert C. Corbet
Signature of Surveyor

495
Registration No.

Office of Clerk and Recorder,
County of Laramie

This "corner record" was filed for record on the 7 day of June, 1978; was noted on the cross-index plat and is assigned page No. _____, in book No. _____.

Janet C. Whitehead
County Official

Cross Index No.	T. _____	R. _____	Mer. _____
	<u>E 13</u>	<u>14</u>	<u>67</u>
	T. _____	R. _____	Mer. _____
	T. _____	R. _____	Mer. _____
	T. _____	R. _____	Mer. _____
	T. _____	R. _____	Mer. _____
	T. _____	R. _____	Mer. _____